

Riversdale Beach Sewerage Scheme UPDATE

Masterton District Council PO Box 444, Masterton
Phone: 06 370 6300 Fax: 06 378 8400 Website: www.mstn.govt.nz

November 2008

What's going on? How, when and who's paying? These are just some of the questions being asked by property owners at Riversdale Beach as the process to build the new sewerage scheme continues. This newsletter takes a look at the decisions made as a result of the recent consultation process. Where to from here? Masterton District Council intends working collaboratively with the community to reach its goal of seeing the scheme operational by 2011. The following pages outline how.

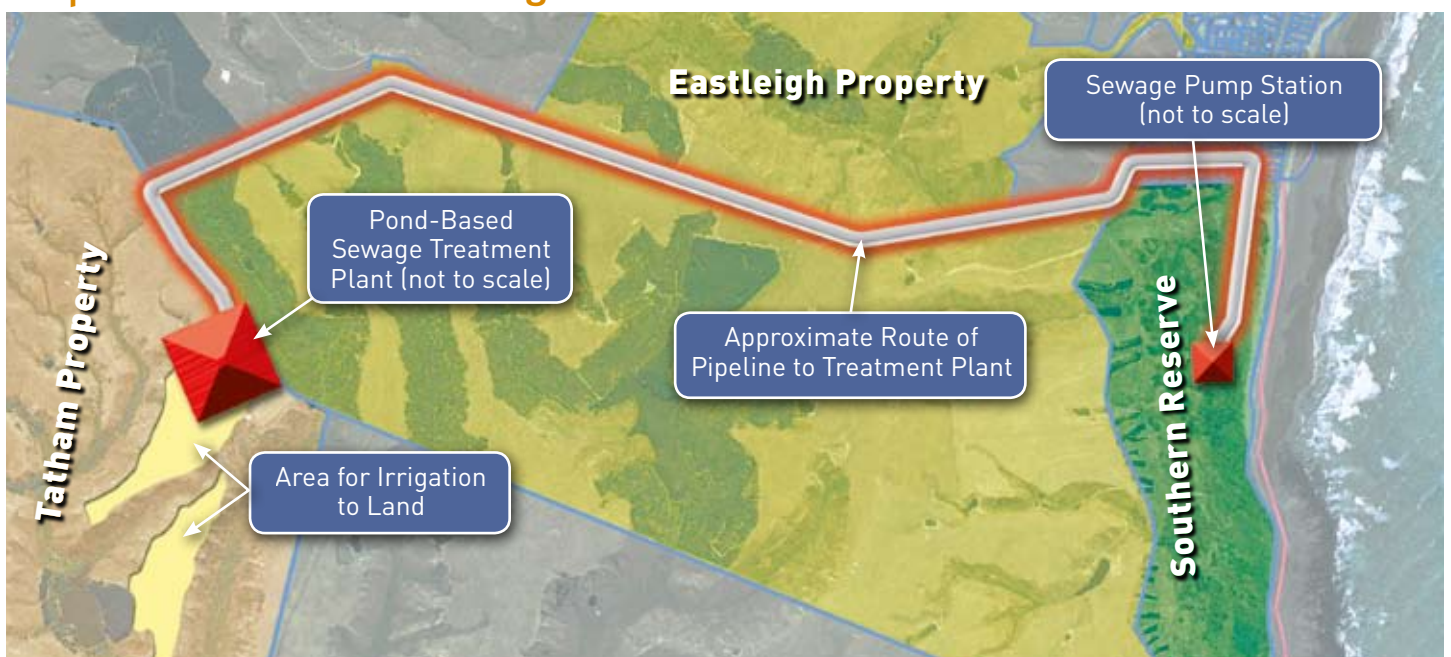
HIGHLIGHTS OF THE PROPOSED SCHEME

The pond-based scheme adopted 'in principle' by Council in October involves the installation of underground reticulation within the Riversdale Beach community to transport raw effluent from properties to a main pumping station at the southern end of the community. The effluent will then be pumped to a treatment and irrigation area built on land currently owned by the Tatham family.

The reticulation scheme proposed will be optimised so that gravity is used where possible and pressure pipes are used where this is not possible. This will ensure that whole of life costs of the scheme are minimised, explained Council's Special Projects Manager Ian Steer.

(continued pg 2).

Proposed Riversdale Sewerage Treatment Scheme



COST ALLOCATION MODEL UNDER REVIEW

Before the end of this year, Council officers will contact representatives from various groups within the Riversdale Beach community with the view to re-convening the working groups who assisted in developing the cost allocation model.

Council's special projects manager Ian Steer said it had been decided to review the cost allocation model in light of the fact a number of submitters had asked the Council to revisit the funding model outlined in the Consultation Pack.

"It is hoped that these groups will take it upon themselves to look at the broader interests of the community and to agree on a funding model that is seen to be fair and equitable. This will involve group members making concessions that have financial impacts for themselves and their members.

"Prior to consultation, various meetings were held to develop this model, and when a vote was called for at a meeting of the Riversdale Beach Sewerage Steering Group, group members declined to make a decision.

"Group members wished to leave the decision to Council with feedback from the consultation phase of the project being the basis for accepting the model or requesting that it be reviewed.

"With a number of people requesting a review, this will be done. An important point to note is that if one section of the community pays less, then another will have to pay more. The model that was proposed sought to get equity in the allocation of costs. This should still be the overriding principle on which the model is reviewed," Mr Steer said.



(continued from pg 1)

A pumping or rising main through Eastleigh property will convey raw effluent to the treatment plant on the Tatham property. The proposed treatment plant features a series of large earthen basins (ponds) which serve the purpose of storing raw effluent, treating the effluent and storing the treated effluent so that its use for irrigation can be optimised. Grass from the irrigated land could be used as baleage, or possible grazing for sheep.

The plan shown on page one, which is a reproduction from the Consultation Pack, is a schematic of the proposed scheme.

ALTERNATIVE TENDERS TO BE CONSIDERED

The number of submissions considered by Council leading into the hearings in September 2008 illustrated the depth of feeling in the community about the new scheme. Cost and the fact all property owners will be required to connect to the scheme means everyone has a vested interest in the final result.

"A number of people made the effort to speak before Council's Hearings Committee in support of their submissions. This was appreciated by Councillors and officers in attendance," said CEO Wes ten Hove in an announcement to media in October.

He also announced the adoption of the recommendation to construct a pond-based sewerage scheme on land currently in the ownership of the Tatham family.

"In adopting this recommendation Council agreed that it would consider alternative tenders for the physical works stage of the project provided that contractors submit whole of life scheme costs, demonstrate that alternative schemes are well engineered, do not place the Sanitary Works Subsidy Scheme subsidy of \$1.92 million at risk, and can be constructed within the timeframe given in the public consultation document."

AUDIT NEW ZEALAND INVOLVEMENT IN THE PROJECT

Audit New Zealand will be involved in auditing the physical works tender phase of the sewerage scheme project, said Council CEO Wes ten Hove.

“Given that alternative tenders will be permitted it is prudent for this phase to be scrutinised to demonstrate that the tender and evaluation procedures to be adopted provide all tenderers with equal opportunity,” he explained.

CULTURAL IMPACT ASSESSMENT

One of the outcomes of the hearings process was a request for Council to undertake a Cultural Impact Assessment on the impact of the proposed sewerage scheme. This will take place early next year.

In situating the pumping station on the Southern Reserve, the Council is mindful of its responsibility to protect the environmental and cultural integrity of the reserve.

WHERE TO FROM HERE? Revised Project Timeline

Date	Action
January 2009 (Anniversary Weekend)	Riversdale Beach Ratepayers' Association Meeting
February 2009 – August 2009	Resource consent process
December 2009	Physical works contract accepted by Council
Late January 2010	Physical work commences
November 2010	Physical works contract completed
November 2010	Plant commissioning commences
February 2011 – March 2011	Plant completed and operational

DUFFILL WATTS GROUP TO DESIGN SCHEME

As stated in October, Council approved the tender from Duffill Watts Group (DWG) to undertake the design and construction management of the proposed sewerage scheme.

The Council, at a special meeting on October 1, accepted a fee proposal from DWG worth approximately \$670,000 to provide professional services for the Riversdale Beach Community Sewerage Scheme.

DWG is a large multi-disciplinary consultancy with experience in the design, consenting and construction management of a range of types of sewerage plants. DWG have over a number of years provided professional services to the Council in the areas of roading and traffic engineering, says Council's Special Projects Manager Ian Steer.

Reports and information relating to this project are in the public arena and can be downloaded on the Council website www.mstn.govt.nz

OTHER SCHEMES SUBJECT TO TENDER EVALUATION PROCESS

For a number of years the Council has sought advice from different consultants specialising in the field of sewage treatment and disposal to determine the best option for the Riversdale Beach community.

Council's Special Projects Manager Ian Steer said this advice had "repeatedly been to construct a pond-based sewerage scheme as it provides the best option for the community, it has the lowest whole of life costs, and provides the most robust, long term low-risk solution to cater for the high peak flows and long unoccupied periods that occur at many Riversdale properties. Additionally the Council has been advised that a "mix and match" of pressure and gravity systems may provide the best reticulation solution for the community".

"We are aware that a number of people within the Riversdale Beach community have been in contact with one of the tenderers from the aborted 2004 design and build tender process for the sewerage scheme, and have over a number of months distributed information asserting that the scheme type proposed by this contractor will be cheaper and better for Riversdale Beach.

"The proposal as put forward, lacks detail as to the type of treatment system proposed and is predicated on the use of a pressure type system only. This lack of detail is not helpful in the comparison of scheme types and costs.

"The focus on pressure reticulation systems takes no account of the fact that areas within the community could be adequately serviced by a gravity system, and that the whole of life costs for these systems are less than pressure systems," Mr Steer said.

Chairperson of the Riversdale Beach Sewerage Steering Group Councillor Roddy McKenzie has urged those seeking to promote other schemes to wait on the outcome of the physical works tender evaluation process as this will give contractors proposing alternative schemes the opportunity to demonstrate that they can construct a better engineered solution for the community with lower whole of life costs.

"Promoting such alternative schemes suggests that there is a wish to circumvent good tendering practice and adopt a scheme purely on the basis that a contractor says they can provide a good deal for the community. This belies the findings of consultants who have no vested interests in adopting one scheme over another, and who have advised Council to proceed with a pond-based scheme with a mix of reticulation types."

SEWERAGE SCHEME ON JAN MEETING AGENDA

Council officers, councillors and Duffill Watts Group have been invited to address the Riversdale Beach Ratepayers' Association at its annual meeting in late January. They will provide progress information on details of the design, the resource consent application process and general details relating to the scheme. One of these is a range of funding scenarios.

Informal consultation will be ongoing throughout the project so make use of the Council's web section on scheme developments by visiting www.mstn.govt.nz/projects/riversdale, call the Council on (06) 370 6300 or email Riversdalesewerage@mstn.govt.nz