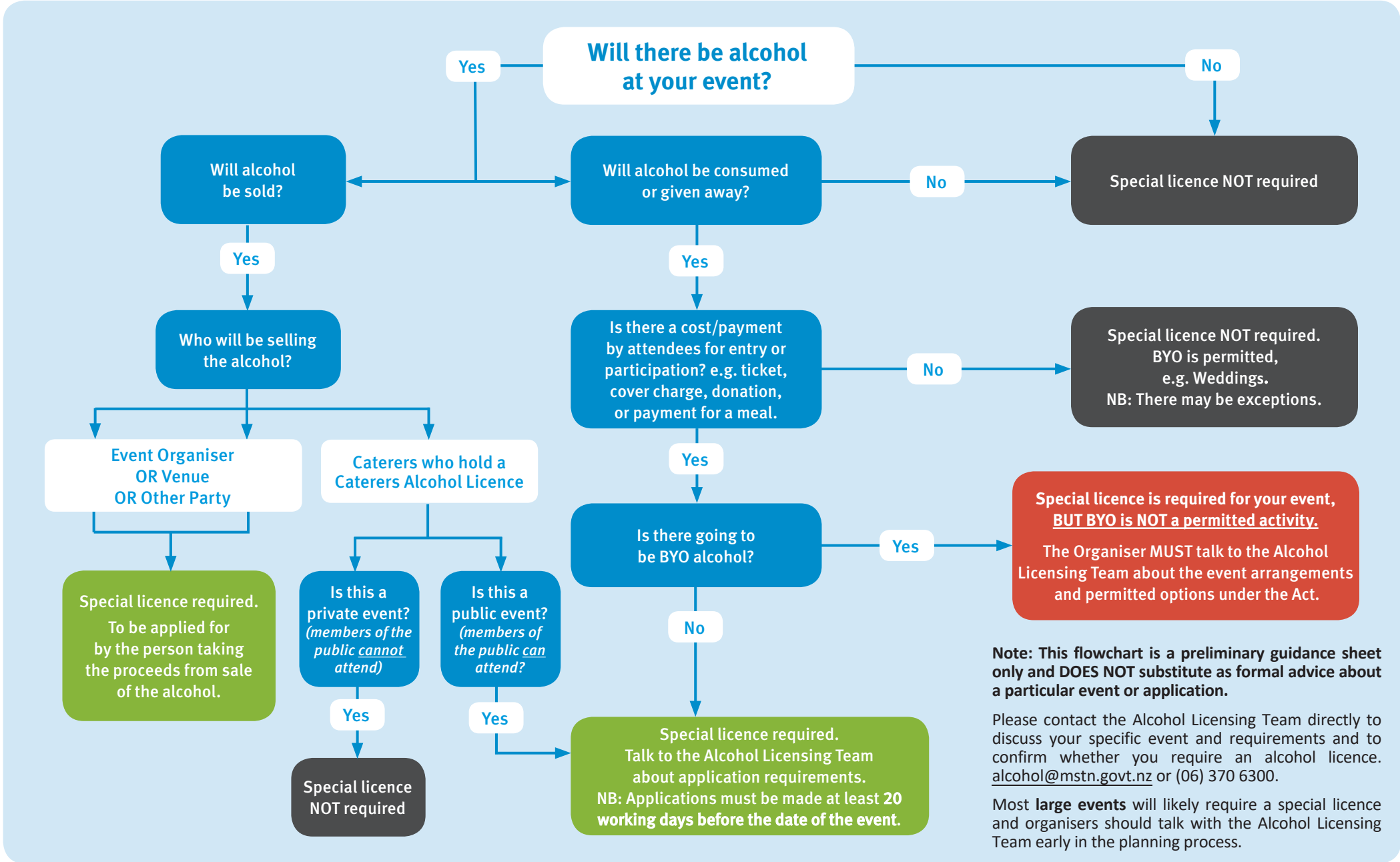


Does your event need a Special Licence?



Note: This flowchart is a preliminary guidance sheet only and DOES NOT substitute as formal advice about a particular event or application.

Please contact the Alcohol Licensing Team directly to discuss your specific event and requirements and to confirm whether you require an alcohol licence. alcohol@mstn.govt.nz or (06) 370 6300.

Most **large events** will likely require a special licence and organisers should talk with the Alcohol Licensing Team early in the planning process.